

## KIT 404 - MOD KIT-THROTTLE PEDAL

### 1. PREPARATION

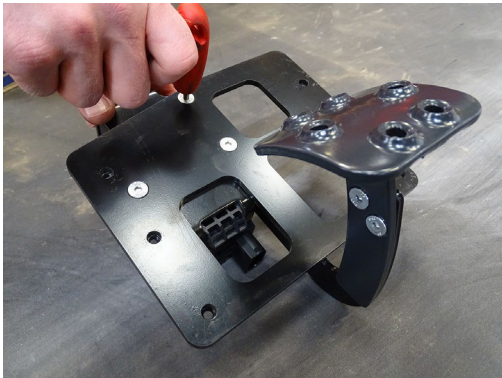
- 1.1. Park machine on firm level ground and apply parking brake.
- 1.2. Place in neutral, stop engine and remove ignition key.
- 1.3. Switch battery Isolator to 'OFF'
- 1.4. Remove floor mat (Cab machines only)
- 1.5. Remove floorplate(s).

### 2. PRE-ASSEMBLY

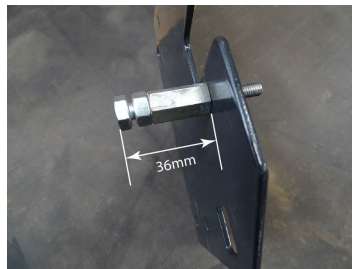
- 2.1. Remove treadle pad from throttle pedal (107621), retain screws.
- 2.2. Fit throttle pedal treadle assembly (107520) to throttle pedal with existing screws.



- 2.3. Fit mounting plate (107465) to the pedal assembly with socket c/sunk head screw (16473) 3 off.

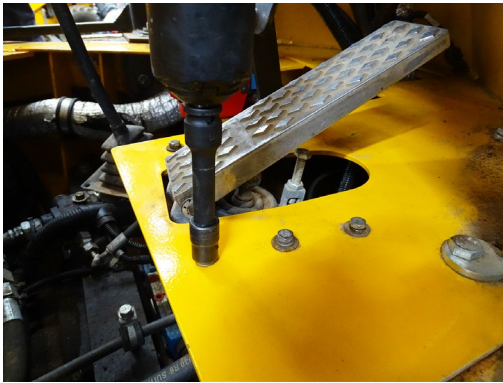


- 2.4. Fit throttle stop (107522) to shield plate (107521) and secure with plain washer (13911) and nyloc nut (16481).
- 2.5. Set so that the of the set screw head (7465) is 36mm from the top of the shield plate, secure lock nut (9775).



### 3. REMOVE THROTTLE PEDAL FROM MACHINE.

- 3.1. Remove the 6 fixings holding the throttle pedal, discard.
- 3.2. Feed throttle pedal down through the hole in the leg guard.



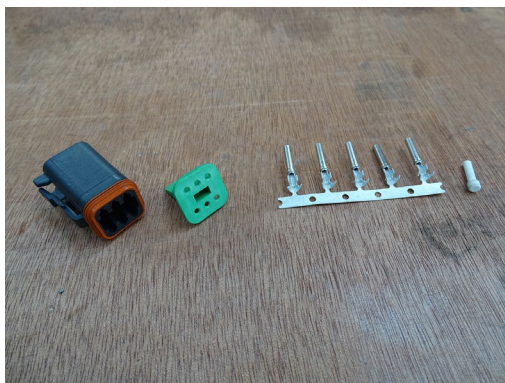
- 3.3. Disconnect harness plug from throttle pedal.
- 3.4. Discard throttle pedal.



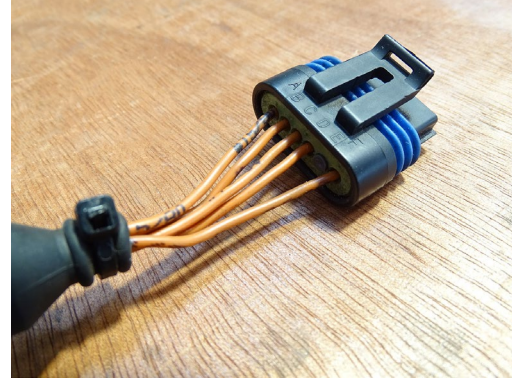
### 4. CHANGE THROTTLE CONNECTOR ON THE VEHICLE HARNESS.

**IMPORTANT** - When cutting the wires **ONLY CUT ONE WIRE AT A TIME!** Crimp a terminal supplied onto the wire, then insert the terminal/wire into the correct cavity of the Deutsch connector supplied **BEFORE CUTTING THE NEXT WIRE!**

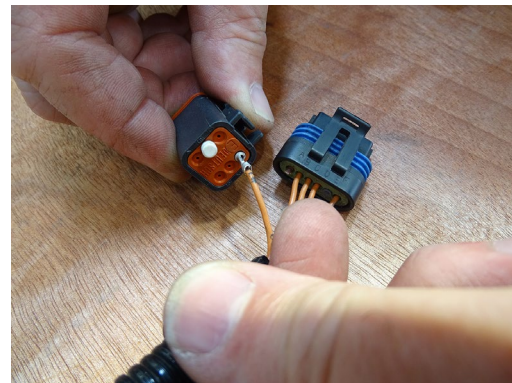
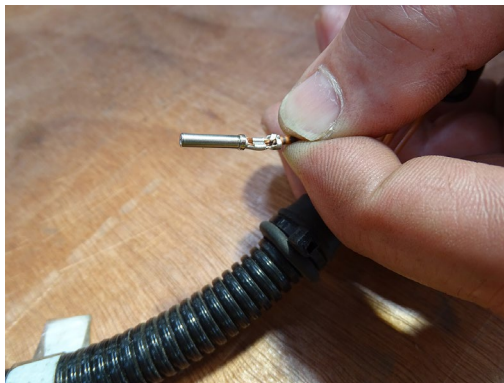
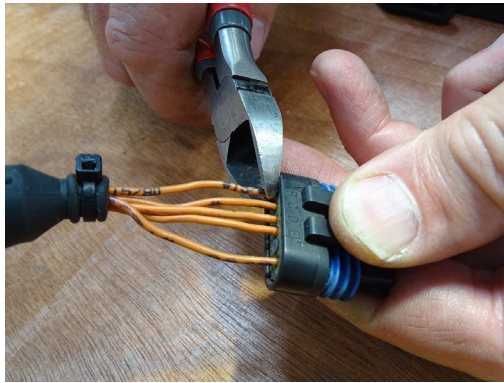
- 4.1. Parts required from kit.
- 4.2. Fit the cavity plug supplied in the service kit into cavity `5' of the Deutsch connector supplied.



- 4.3. On the vehicle harness, throttle pedal connector (marked C021), on the top side of the connector you will see the cavities are named from left to right 'A-F'.



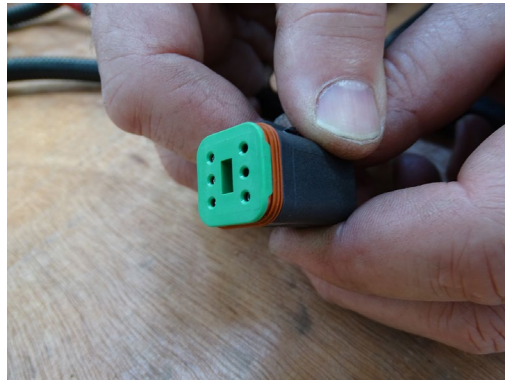
- 4.4. Starting with the wire in cavity 'A', cut the wire.  
4.5. Remove @4-5mm of insulation from the wire.  
4.6. Crimp a terminal supplied to the stripped wire.  
4.7. Insert the crimped terminal/wire into cavity '1' of the Deutsch connector.



- 4.8. Repeat this process with the wires from cavities B, C, D, F, inserting each crimped terminal/wire into the Deutsch connector supplied, into cavities 2, 3, 4, 6 respectively.

**REMEMBER-Complete one wire before cutting the next!**

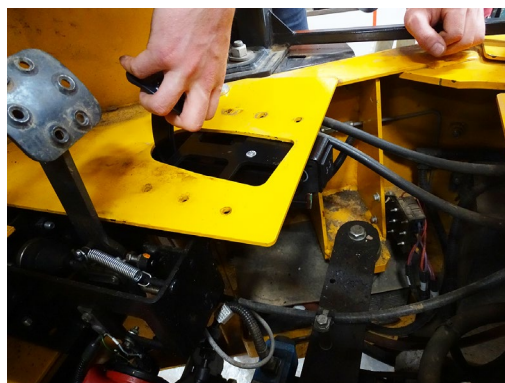
4.9. Once all five terminals/wires are inserted into the Deutsch connector, insert the wedgelock to lock the terminals into position.



## 5. FIT THROTTLE PEDAL ASSEMBLY.

5.1. Connect the sub-harness (107636) to throttle pedal assembly.

5.2. Feed the throttle pedal assembly up through the hole in the leg guard.



5.3. Secure in 2 diagonal locations as shown with set screws (16476), spring washers (14837) and heavy duty washers (15830).

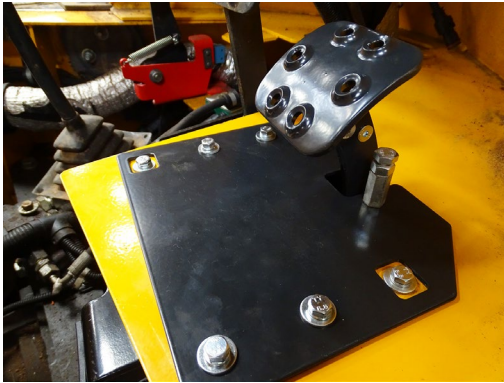
5.4. Connect harness plug to throttle pedal sub-harness.



## 6. PEDAL SHIELD ASSEMBLY

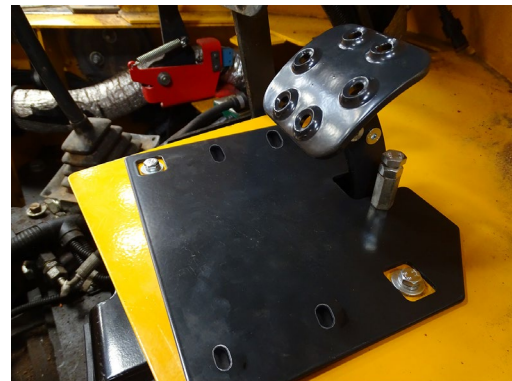
### STANDARD MACHINES

- 6.1. Fit pedal shield assembly to leg guard with 4 set screws (16476), spring washers (14837) and heavy duty washers (15830).
- 6.2. Refit floorplate.

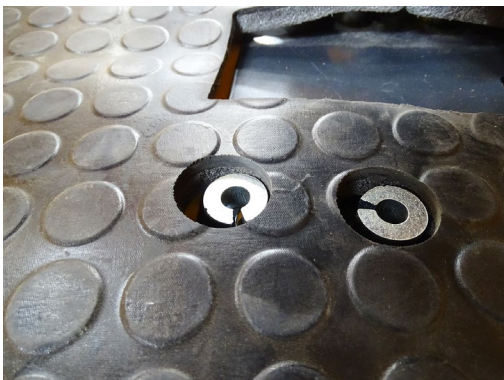


### CAB MACHINES

- 6.3. Turn floor mat over and cut out the 4 holes shown.
- 6.4. Place pedal shield assembly on to leg guard.
- 6.5. Refit floorplates.



- 6.6. Refit floor mat, ensure pedal shield assembly remains in place.
- 6.7. Place the 4 spacers (107549) in the holes in mat.
- 6.8. Fit throttle pedal cover (107547) to leg guard with 4 set screws (17155), spring washers (14837) and heavy duty washers (15830) ensure all plates and spacers in line.



## 7. COMPLETION

### 7.1. Switch battery Isolator to 'ON'

#### Parts List

107621	Throttle pedal - Curtis	1 off
107520	Throttle Pedal Treadle	1 off
107465	Throttle Pedal Mount	1 off
16473	Socket C/Sunk Head Screw	3 off
107522	Throttle Stop	1 off
13911	Washer	1 off
16481	Nyloc Nut	1 off
7465	Set Screw	1 off
9775	Nut	1 off
107521	Pedal Shield	1 off
107636	T4 Sub-harness Throttle Curtis	1 off
14837	Spring Washer	6 off
15830	Heavy Duty Washer	6 off
54824	Deutsch 6-way socket housing	1 off
54825	Deutsch Wedgelock	1 off
54826	Deutsch socket terminal	5 off
54827	Deutsch cavity plug	1 off
16476	Set Screw	6 off

#### **CAB ONLY**

107547	Pedal Cover	1 off
107549	Spacer	4 off
17155	Bolt	4 off

#### C021 THROTTLE PEDAL

Cav ID	Wire ID	Tag	Color	Size	Option	Destination	Multicore ID
A	69	TS/80	O	0.75		C046-63	
B	70	TS/85	O	0.75		SP6-X	
C	71	TS/81	O	0.75		C046-46	
D	72	TS/79	O	0.75		C046-16	
E							
F	73	TS/86	O	0.75		SP6-X	

Connector : 1 : 12162210

Term Socket 1-2mm Metripack : 5 : 12124075

BLANK : 1 : 12065266

